



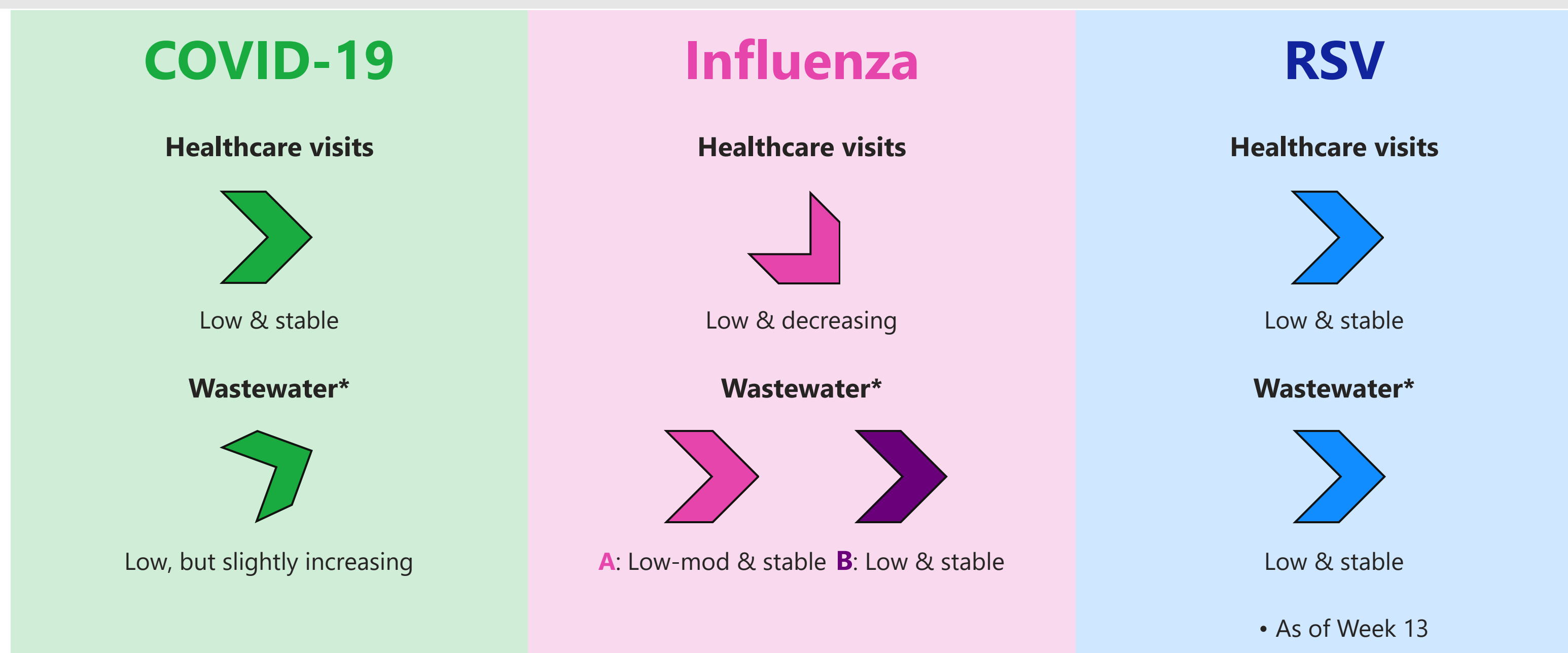
**HOUSTON HEALTH**  
**DEPARTMENT**

# **Respiratory Diseases Surveillance Report**

*2024-2025 Influenza Season*

MMWR Week 2025-16

Houston Health Department



## Trends for the last 5 weeks (2025-12 to 2025-16):

- The number of **COVID-19 healthcare (HC) visits has been stable for the past 5 weeks** (neither significantly increasing/decreasing). The **mean weekly COVID-19 HC visit count** is about **329 related HC visits a week**, compared to 260 related HC visits a week for the same time frame of the previous year (i.e., this year, for the past 5 weeks, the Houston-area is averaging around as many COVID-19 related HC visits than it averaged for the same weeks the previous year). **COVID-19 levels in wastewater are low, but slightly increasing as of Week 13.**
- The number of **Influenza HC visits has been decreasing for the past 5 weeks**. The mean weekly influenza HC visits count is about **910 related HC visits a week**, compared to 432 related HC visits a week for the same time frame of the previous year (i.e., this year for the past 5 weeks, the Houston-area was averaging about 2.1x as many influenza related HC visits than it averaged for the same weeks the previous year). **Influenza A levels in wastewater are low-moderate and stable, while Influenza B levels remain low and stable (one-week high this week, will be monitored closely for increasing trend next week) as of Week 13.**
- The number of **RSV HC visits has been stable for the past 5 weeks** (change from previous report, neither significantly increasing/decreasing). The **mean weekly RSV HC visit count** is about **39 related HC visits a week**, compared to 39 related HC visits a week for the same time frame of the previous year (i.e., this year, for the past 5 weeks, the Houston-area is averaging around as many RSV related HC visits than it averaged for the same weeks the previous year). **RSV levels in wastewater are low and stable (one-week high this week, will be monitored closely for increasing trend next week) as of Week 13.**

Demographic groups with the highest proportions of healthcare visits by respiratory illness (\*indicates change from previous report):

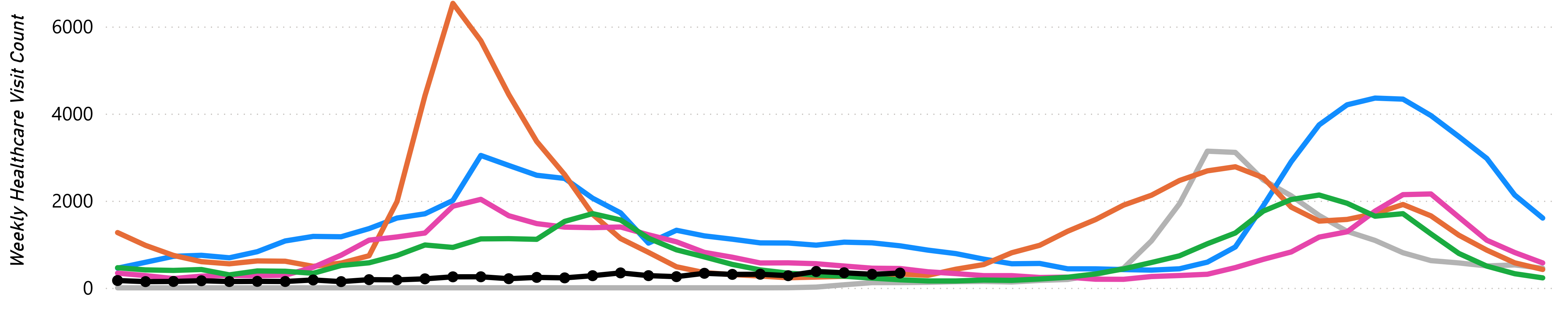
Respiratory Illness	Sex	Age Group	Race-ethnicity
<b>COVID-19</b>	Female	18-44	NH White
<b>Influenza</b>	Female	5-17	Hispanic
<b>RSV</b>	Male	Under 5	Hispanic

- **No updates for Week 14 & 15.** Out of the schools sampled in the wastewater program, 0 tested positive for COVID-19 (1 inconclusive), 1 tested positive for influenza A or B (0 inconclusive), and 0 tested positive for RSV (0 inconclusive) for 2025-13.
- Both the CDC's national and Texas percentages of visits for ILI (influenza-like-illness) are trending downwards, after peaking in February of this year.

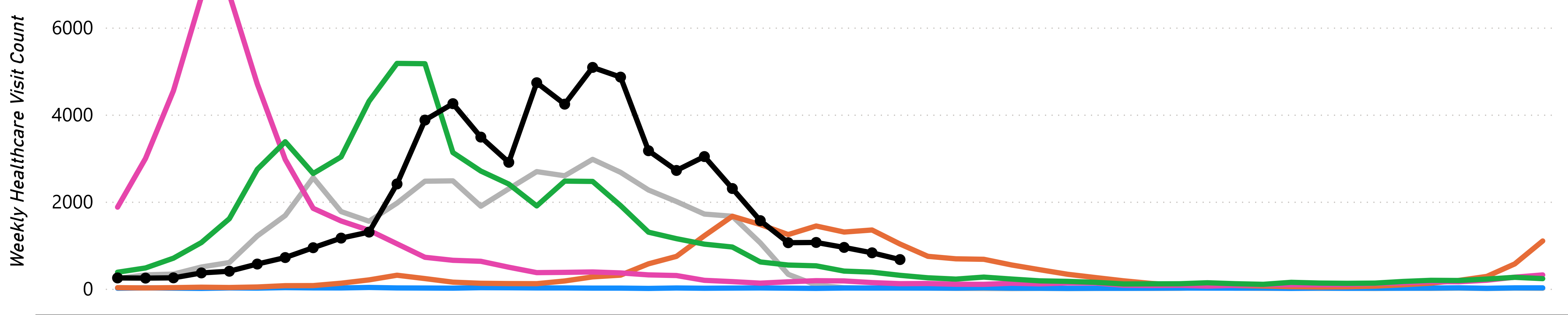
# Respiratory Healthcare Visits by Influenza Season

**Influenza Season:** — 2019-2020 — 2020-2021 — 2021-2022 — 2022-2023 — 2023-2024 — 2024-2025 (Current)

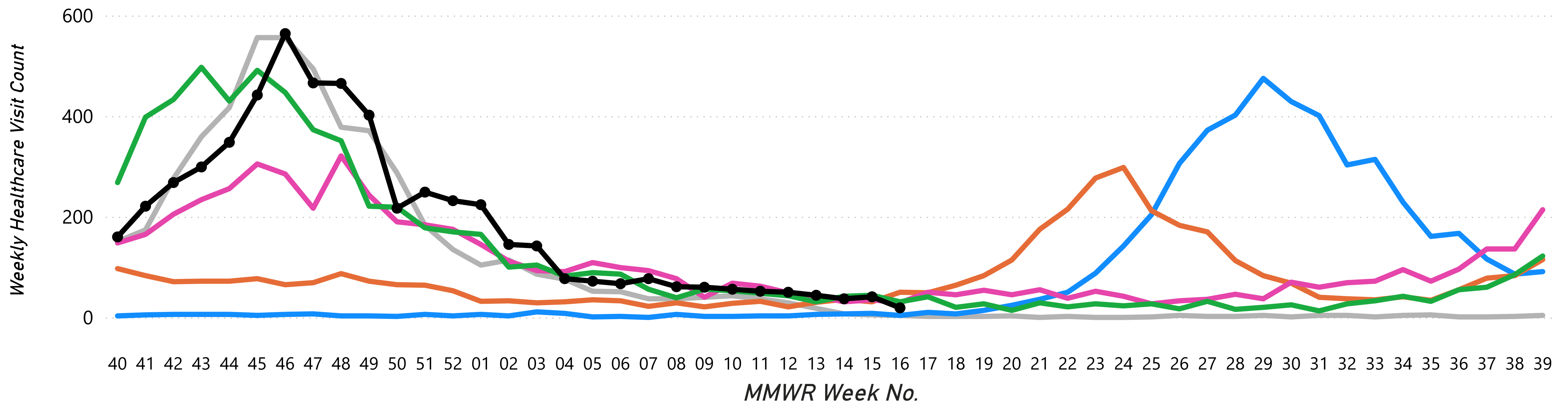
## COVID-19



## INFLUENZA

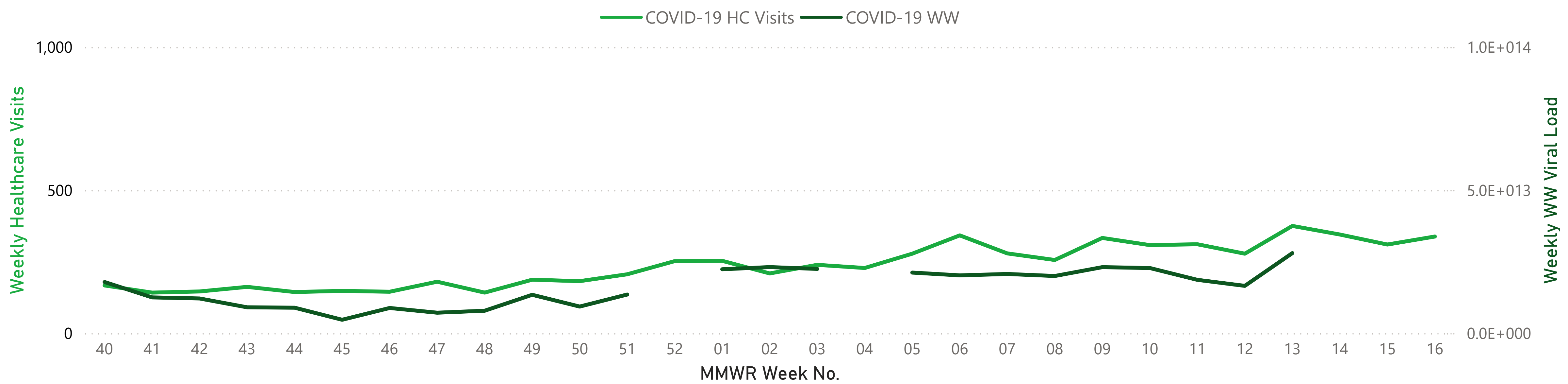


## RSV

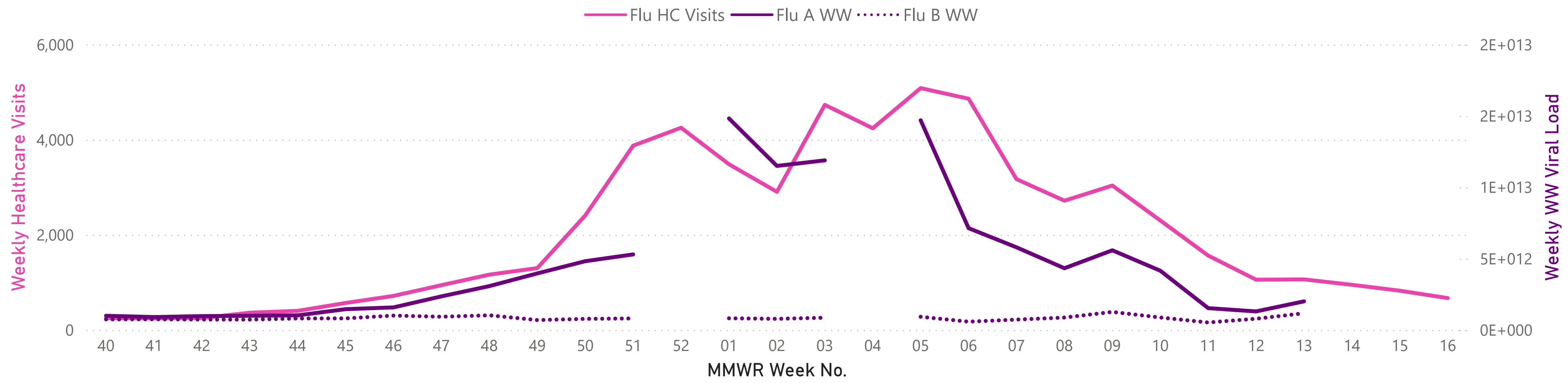




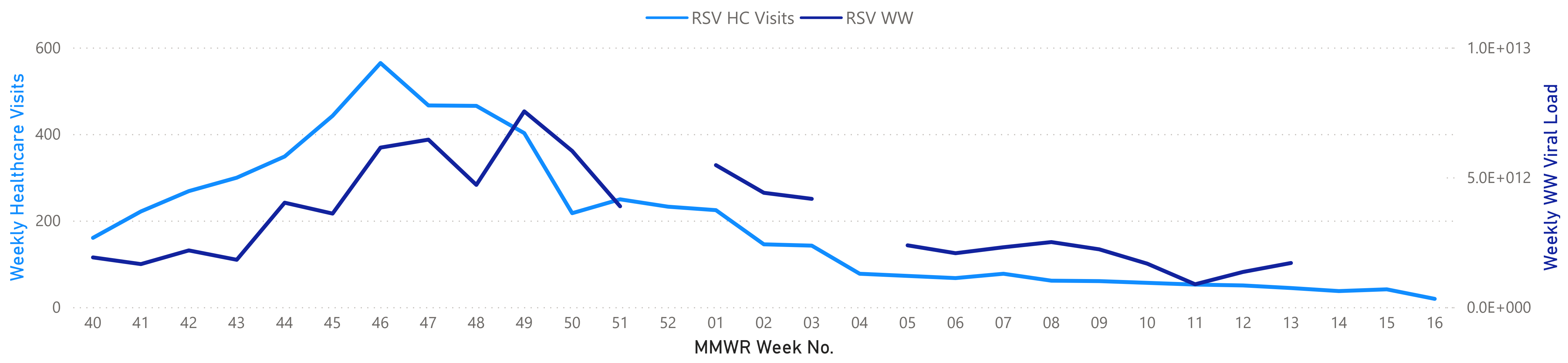
## COVID-19



## Influenza



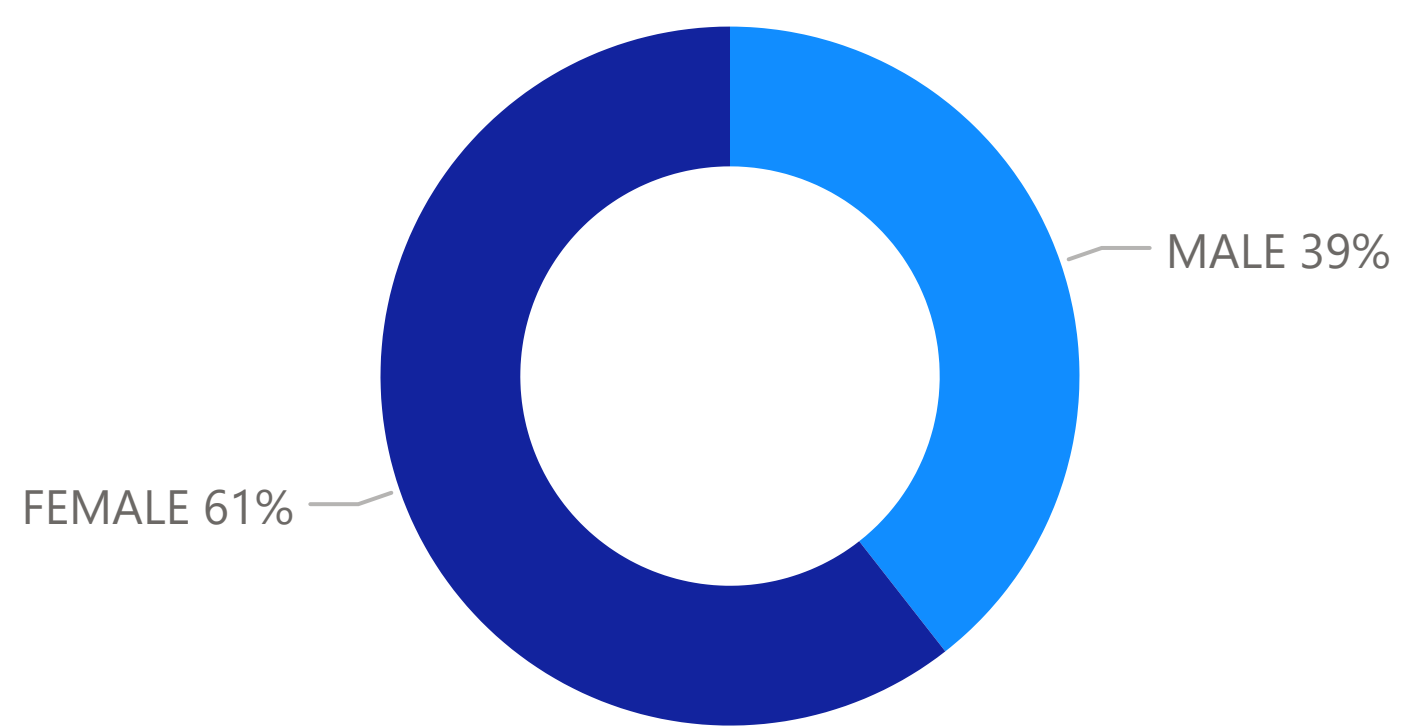
## RSV



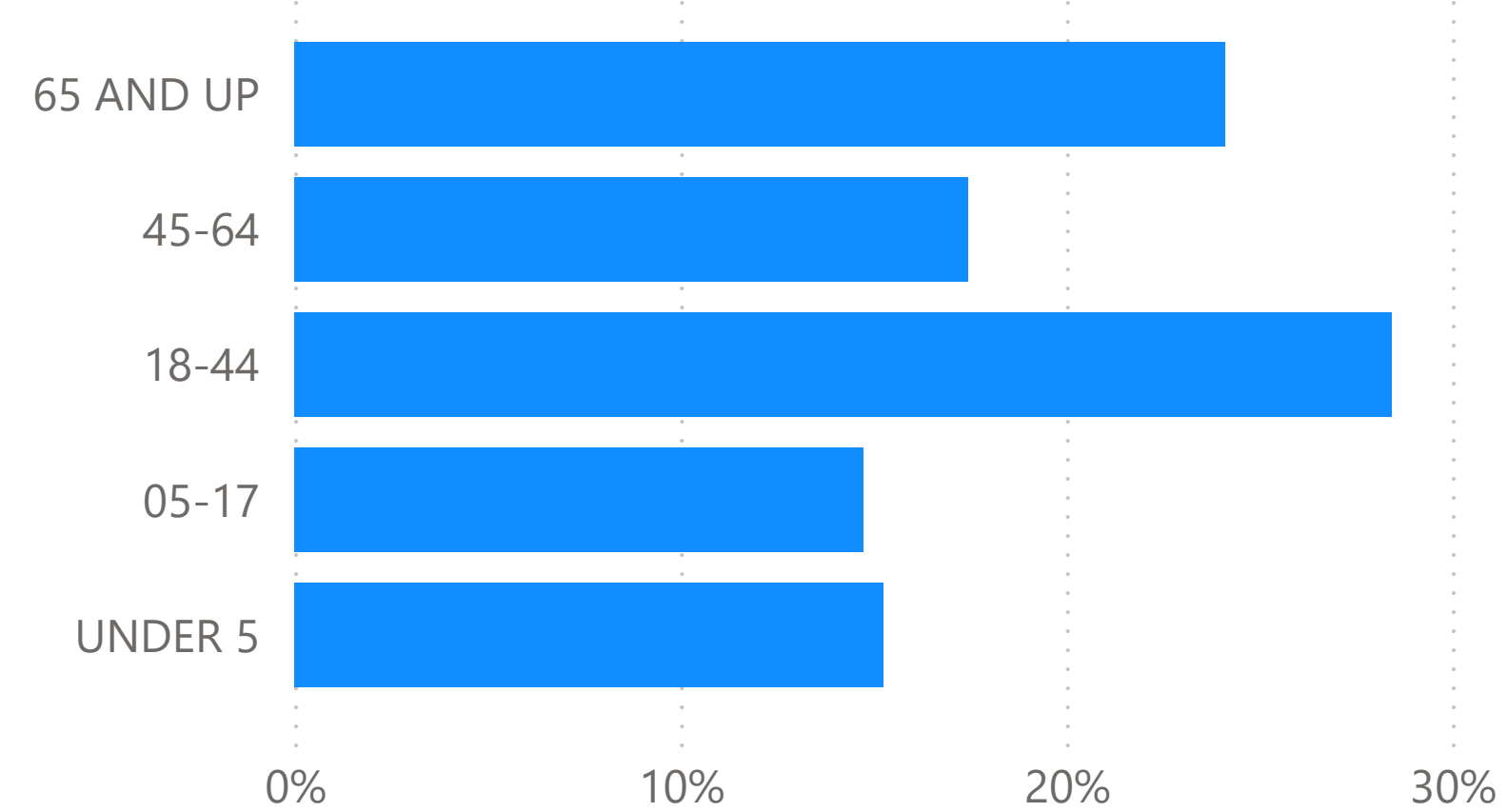
# Demographics by Respiratory Disease (Current Season 2024-2025)

## COVID-19 Healthcare Visits

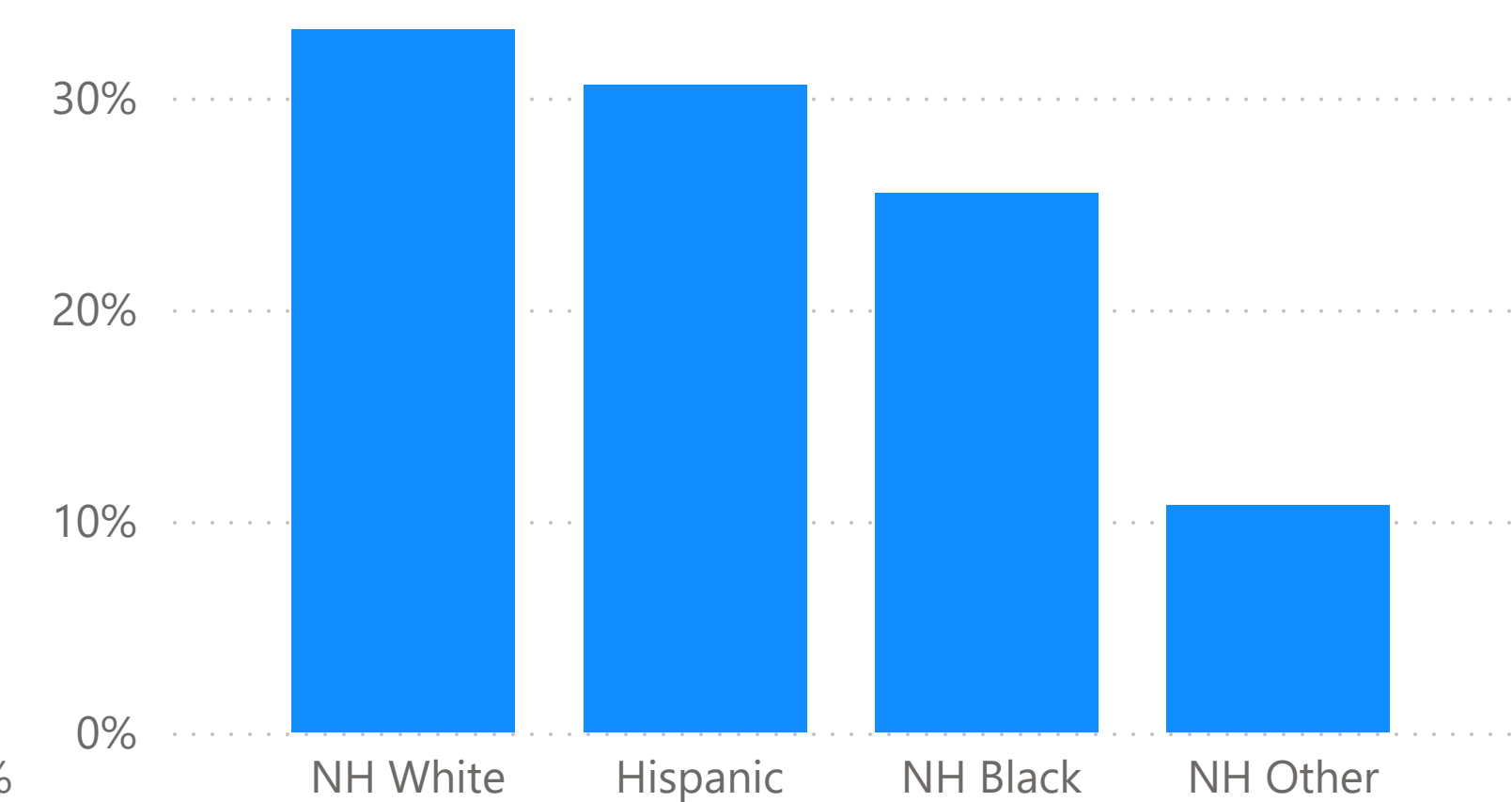
Sex



Age Group

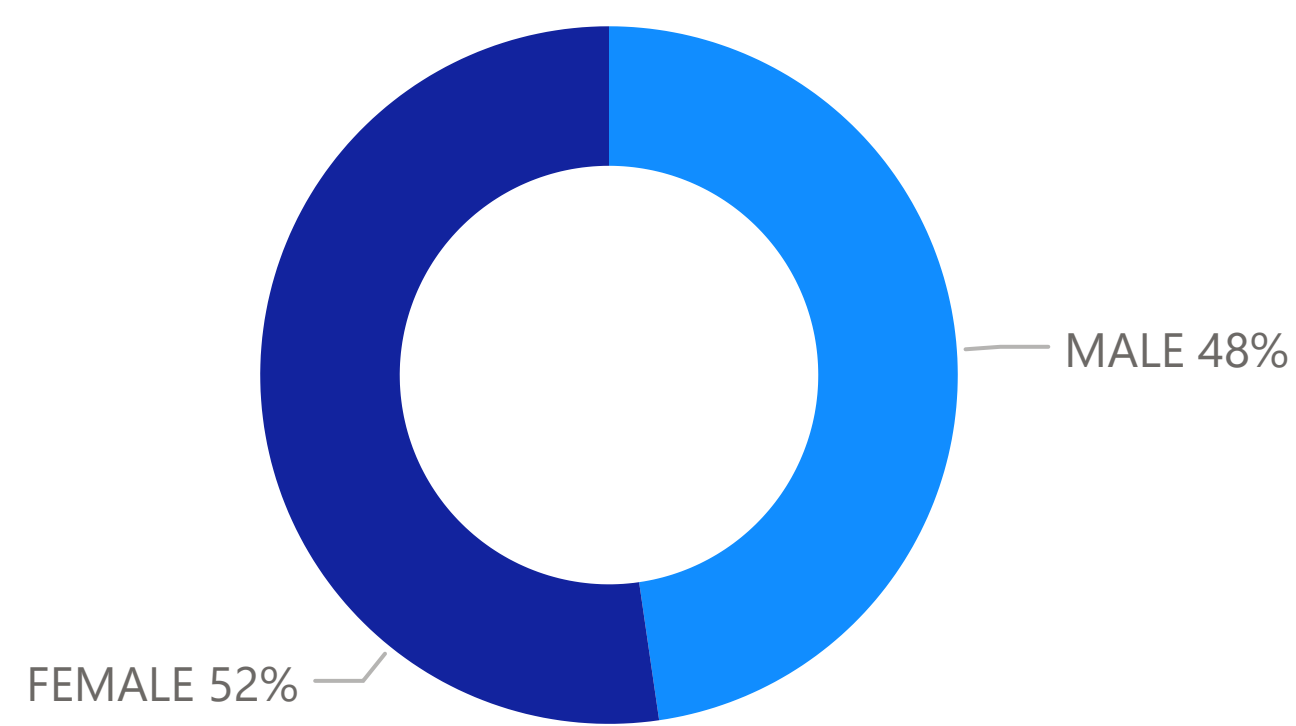


Race-Ethnicity

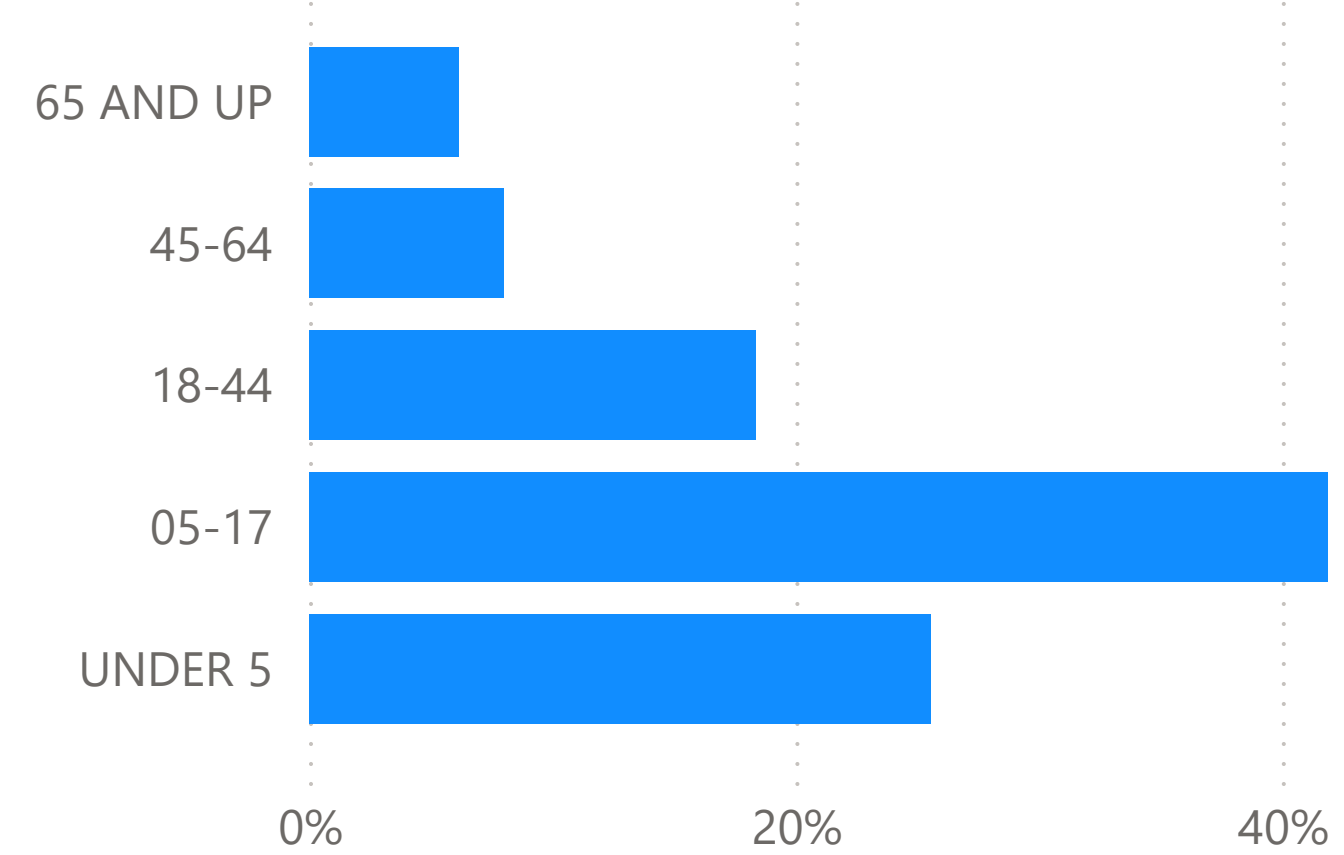


## Influenza Healthcare Visits

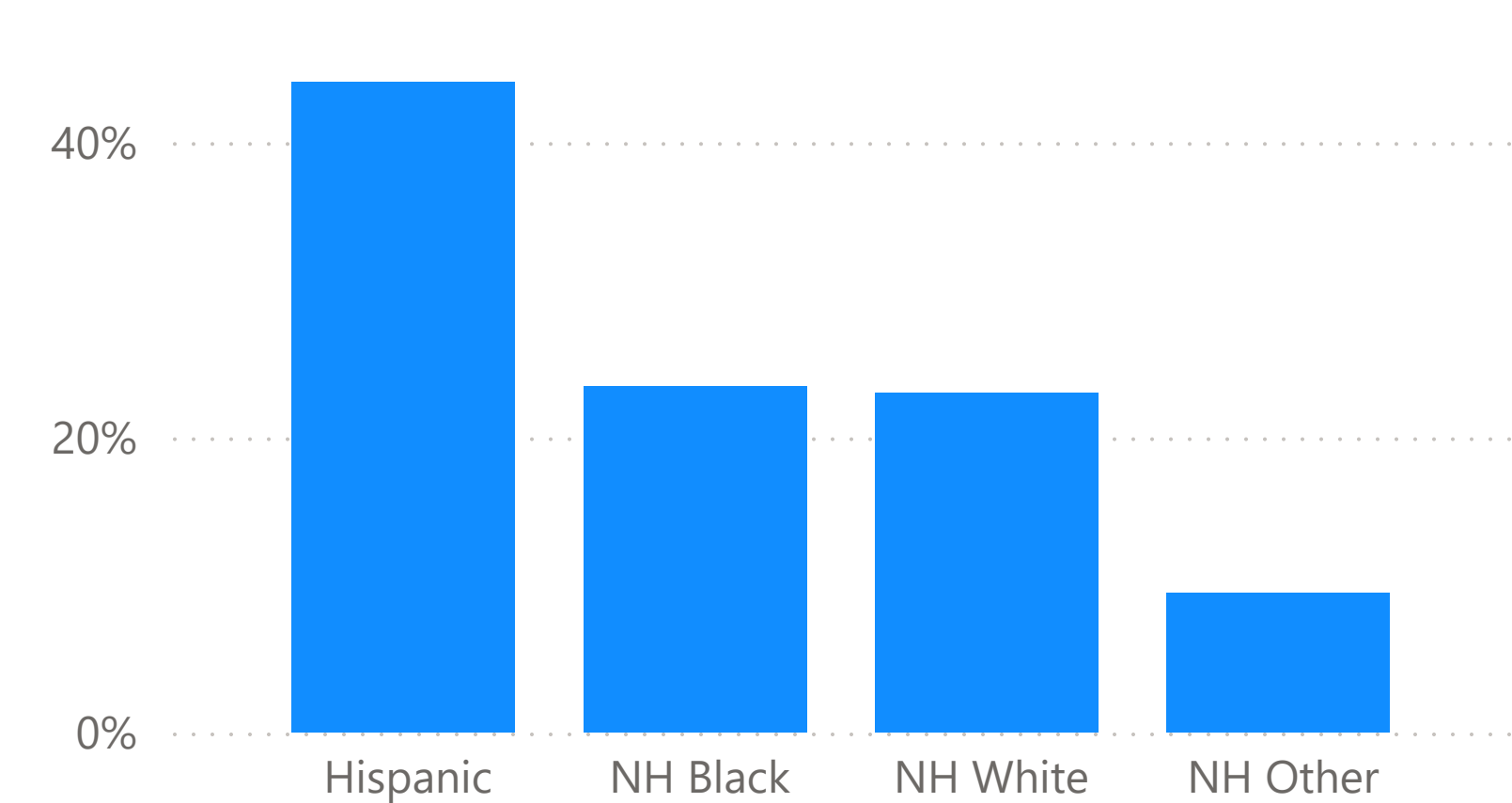
Sex



Age Group

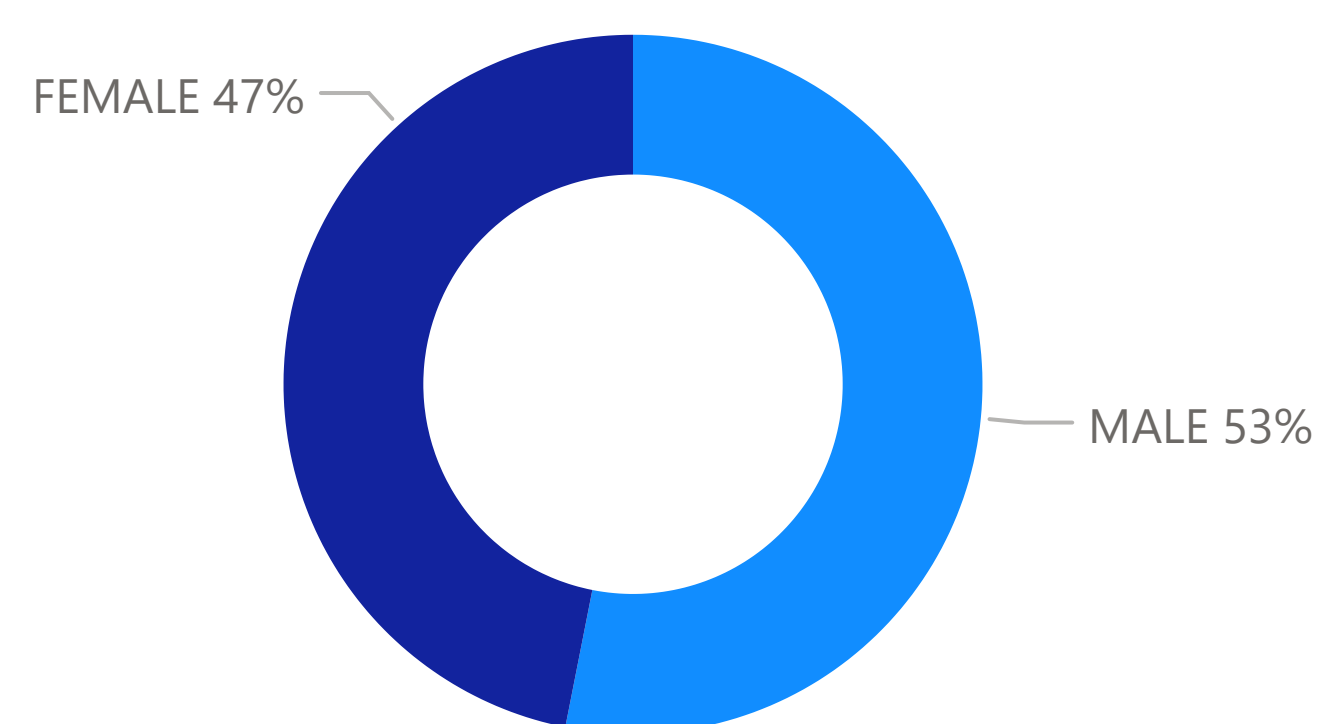


Race-Ethnicity

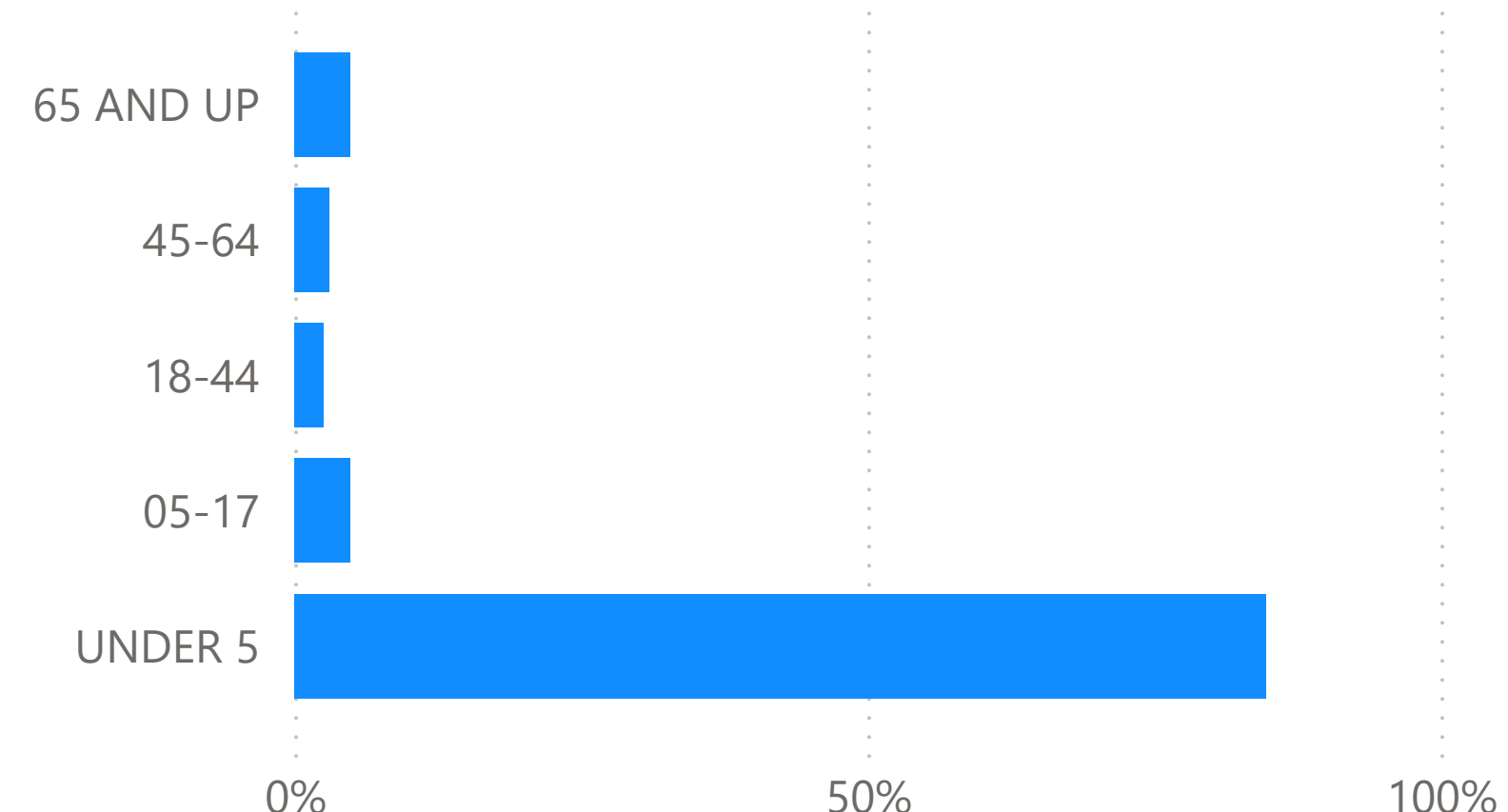


## RSV Healthcare Visits

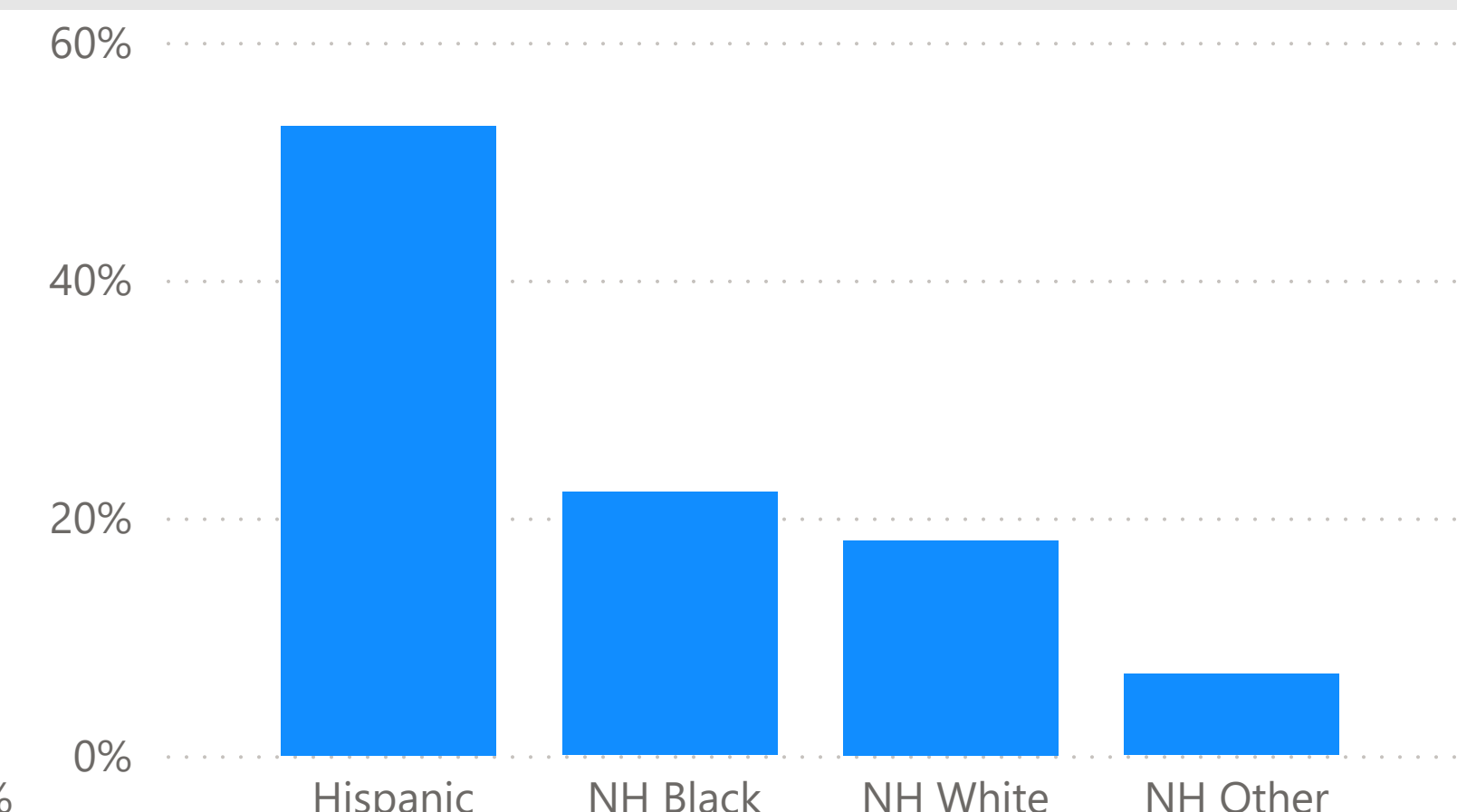
Sex



Age Group

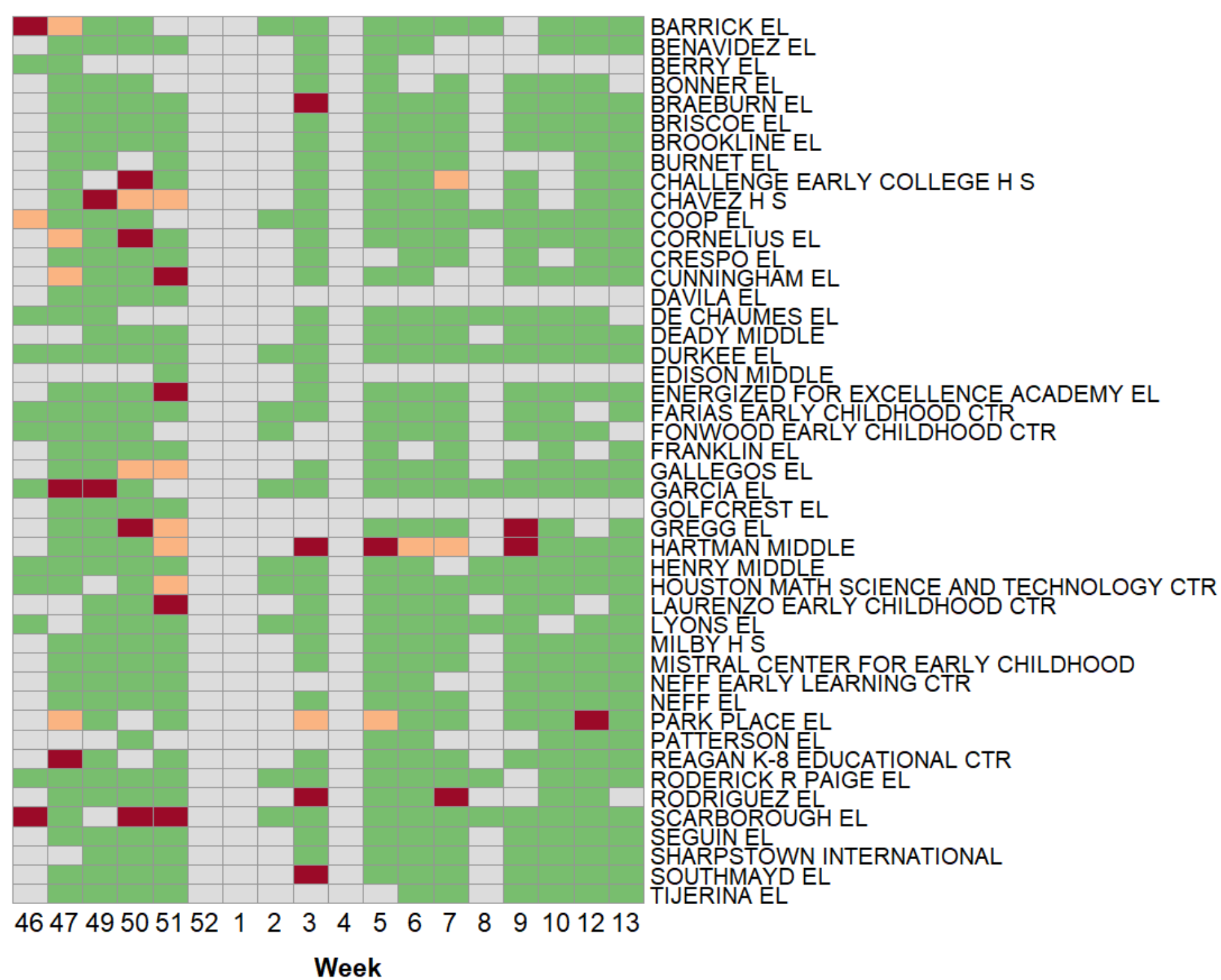


Race-Ethnicity

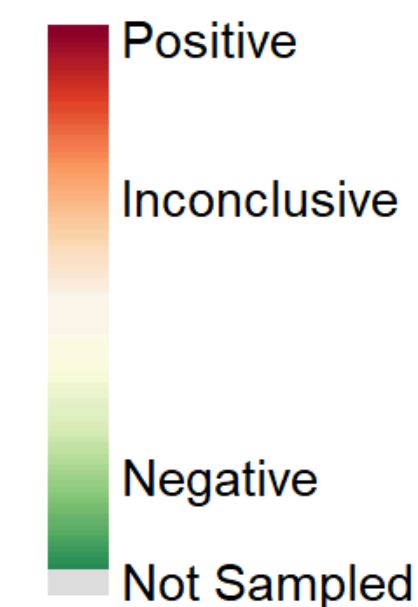
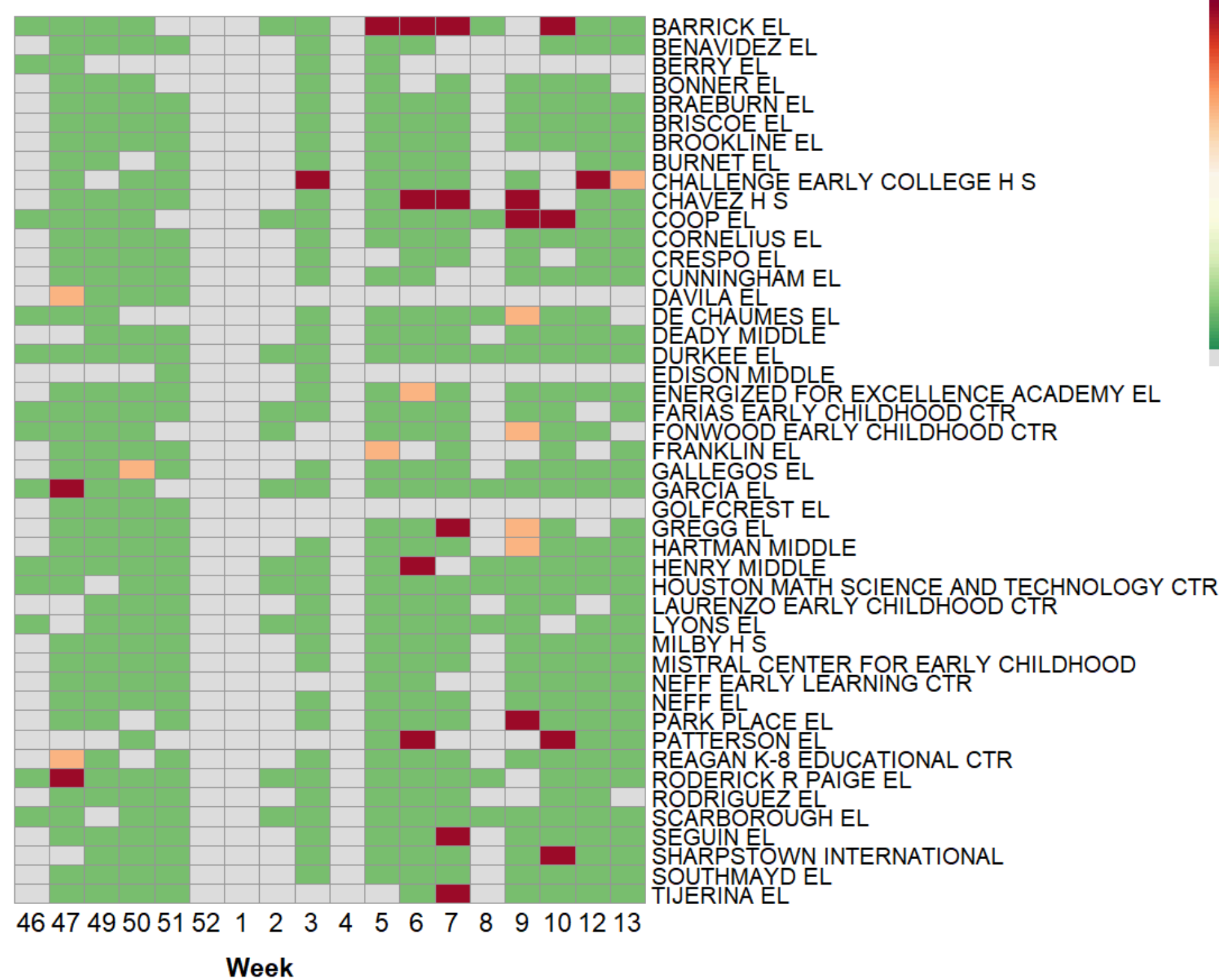


# Influenza and RSV Wastewater Analysis of Schools

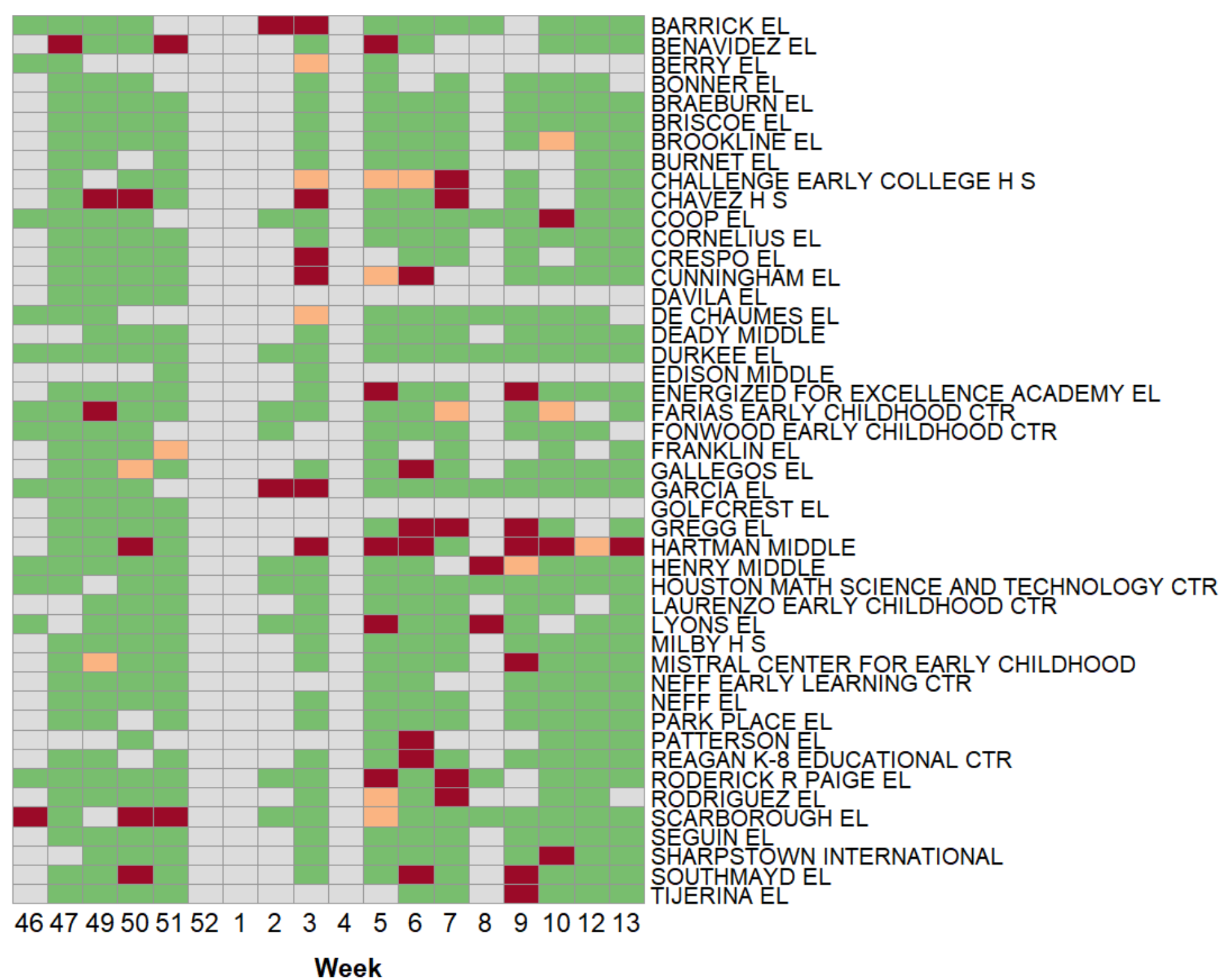
### RSV



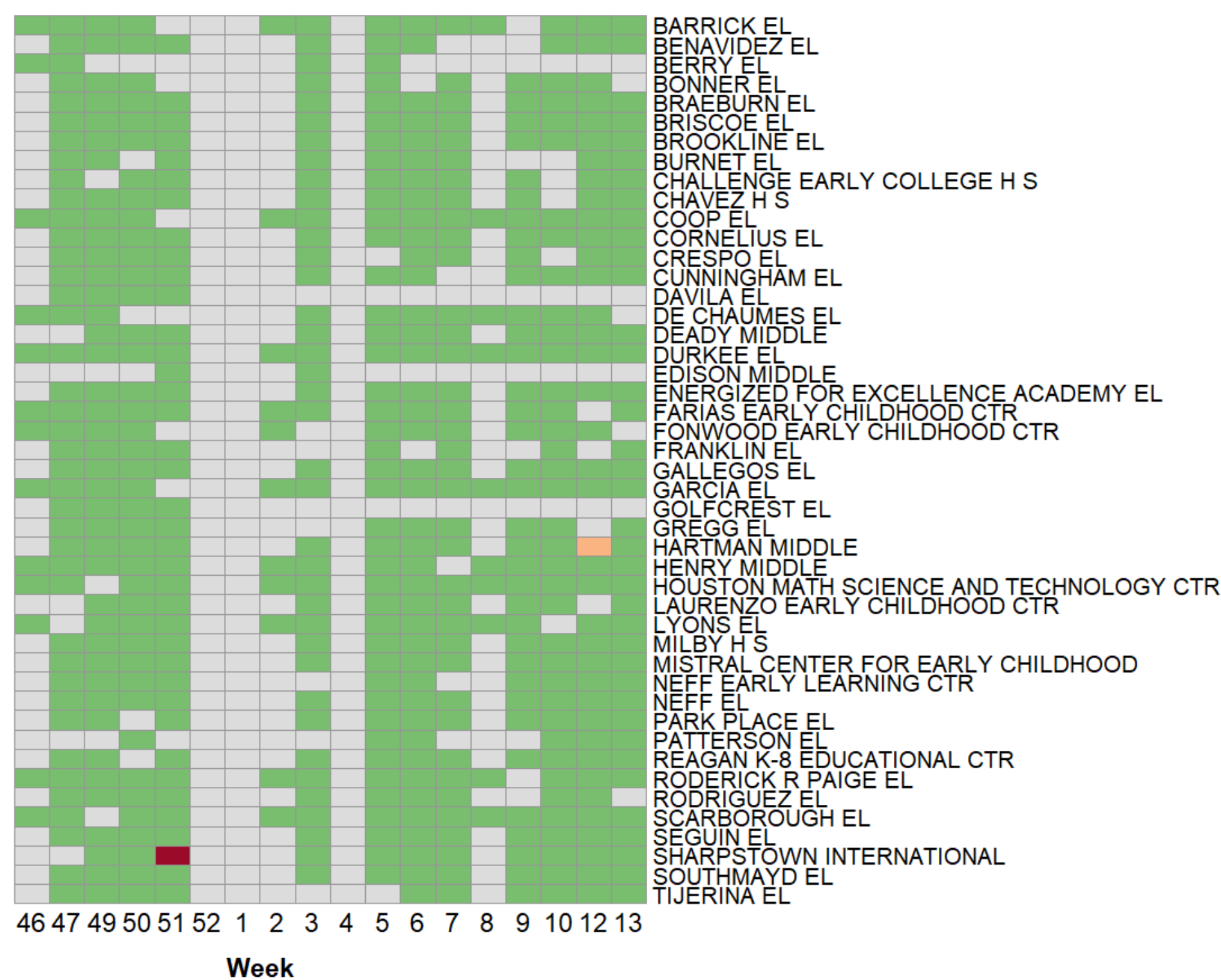
### SARS-CoV-2



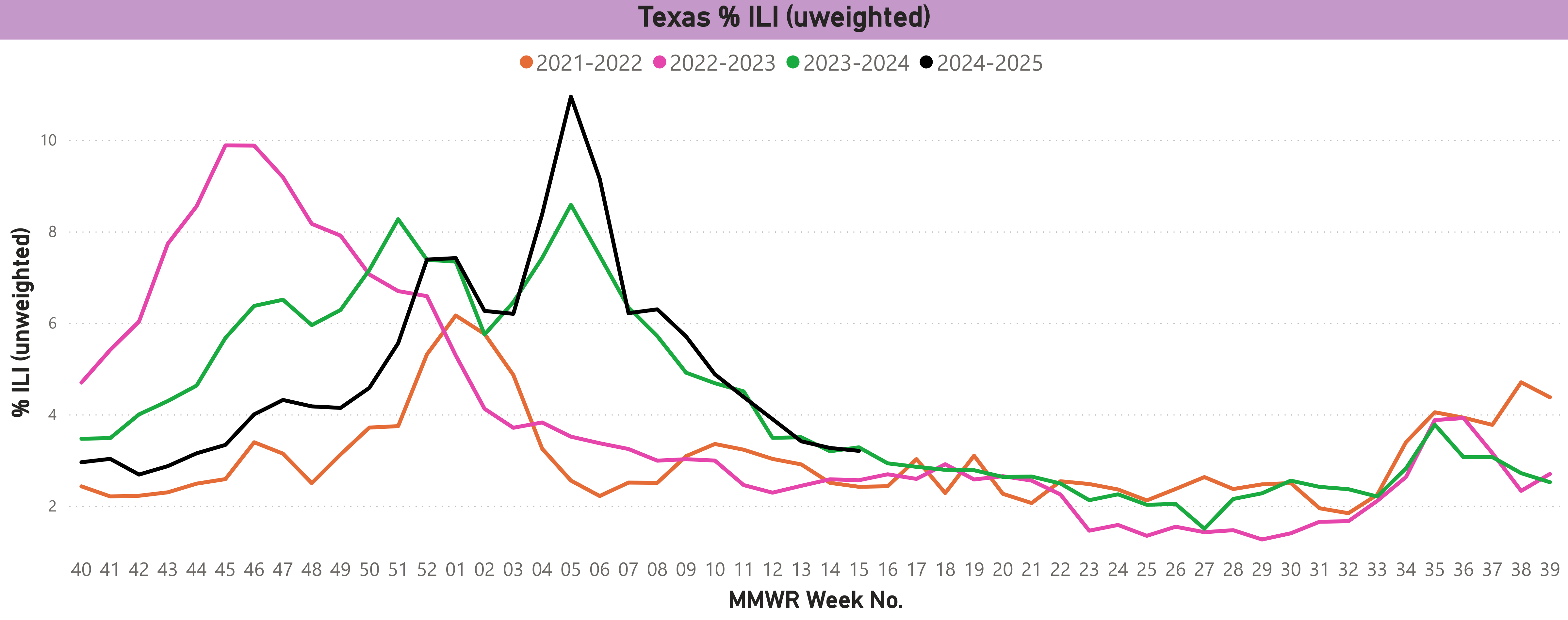
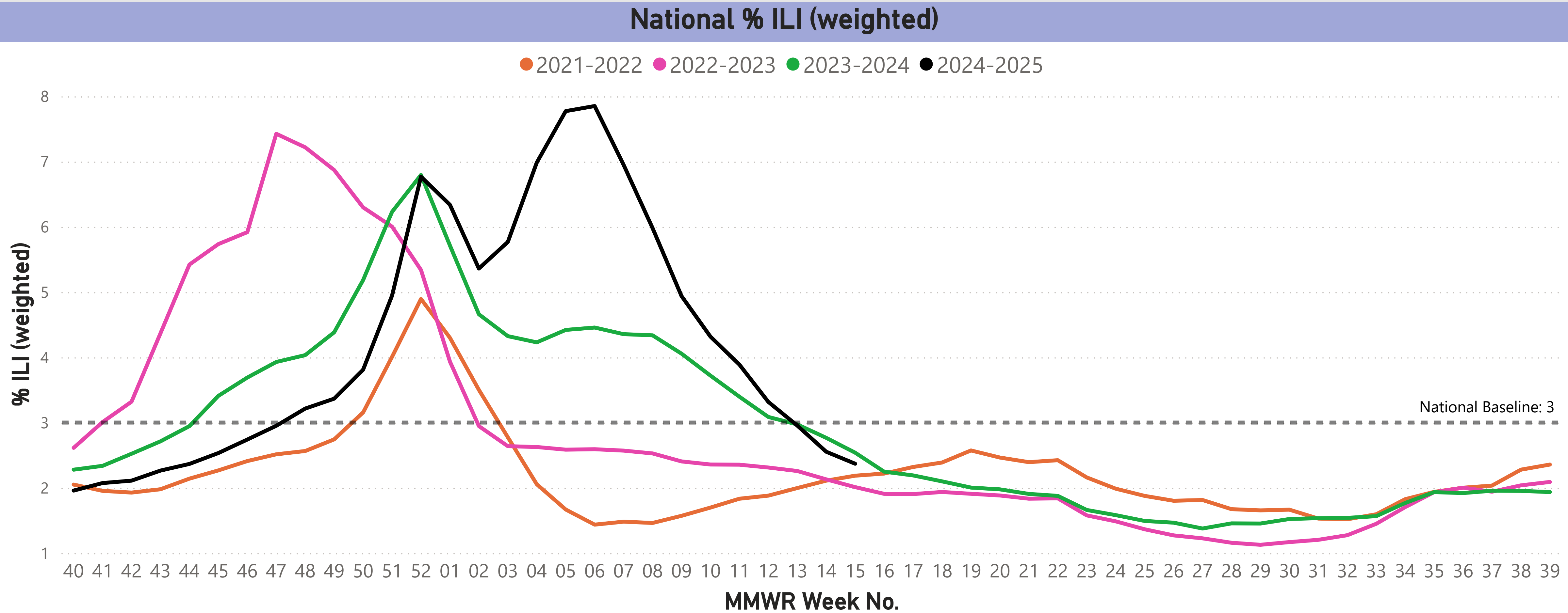
### Influenza-A



### Influenza-B



# ILI Net: National and Texas Seasonal % Influenza-like Illness (ILI)





## Data Sources

- **Healthcare visit data** are from the Houston Health Department's syndromic surveillance system, HHD-ESSENCE,
- **Wastewater data** are provided by the Houston Health Department wastewater surveillance program.
- **ZIP code populations** are from the 2020 Census.

## Queries for syndromic data

**RSV** - CDC Respiratory Syncytial Virus DD v1 (applied to discharge diagnosis fields):

^;B974^,or,^;J121^,or,^;J205^,or,^;J210^,or,^;46611;^,or,^;4801[;/]^,or,^;0796;^,or,^;55735004;^,or,^;408684006;^,or,^;195881003^,or,^;10625551000119103;^,or,^;57089007;^,or,^;195739001;^,or,^;79479005;^,or,^;195727009;^,or,^;72204002;^,or,^;31309002;^

**Influenza** - CDC Influenza DD v1 (applied to discharge diagnosis fields):

(,^[/ ]J09^,or,^[;/ ]J10^,or,^[;/ ]J11^,or,^[;/ ]487.[018][;/ ]^,or,^[;/ ]487[018][;/ ]^,or,^[;/ ]488.[018][19][;/ ]^,or,^[;/ ]488[018][19][;/ ]^,or,^[;/ ]442696006[;/ ]^,or,^[;/ ]442438000[;/ ]^,or,^[;/ ]6142004[;/ ]^,or,^[;/ ]195878008[;/ ]^,)

**COVID-19** - CDC COVID-specific DD v1 (applied to discharge diagnosis fields);

^[/ ]U07.1^,or,^[;/ ]U071^,or,^840539006^,or,^840544004^,or,^840533007^,or,^[;/ ]J12.82^,or,^[;/ ]J1282^

- Syndromic data presented include healthcare visits from onboarded healthcare facilities and only records within the Houston-area. All patient classes (inpatient, outpatient, emergency) are included. Counts for demographic groups are suppressed (if less than 5). Historical season data was updated Jan 2025.
- Data are aggregated to the weekly level. Week numbers listed correspond to MMWR week calendar dates (a week begins on Sunday and ends on the following Saturday). Generally speaking, the influenza season begins in October and lasts until Spring (April/May) of the following year. Time series presented begin Week 40 of the year, usually corresponding to the first week in October.
- Wastewater is sampled once a week (usually on Mondays). However, due to various reasons (holidays, extreme weather), there can be pauses in sampling and figures will not show values on these weeks.
- There is a week lag for any national or state data presented (e.g., report for Week 42 will have national/state data are for Week 40-41).
- All data is affected by varying data lags and, therefore, subject to change. Due to data quality improvement initiatives, recent/current season counts may not be comparable to historical seasons.

For more information and details on wastewater monitoring, please visit: <https://covidwwtp.spatialstudieslab.org/>

For more information and details on national and state data, please visit: <https://gis.cdc.gov/grasp/fluview/fluportaldashboard.html>