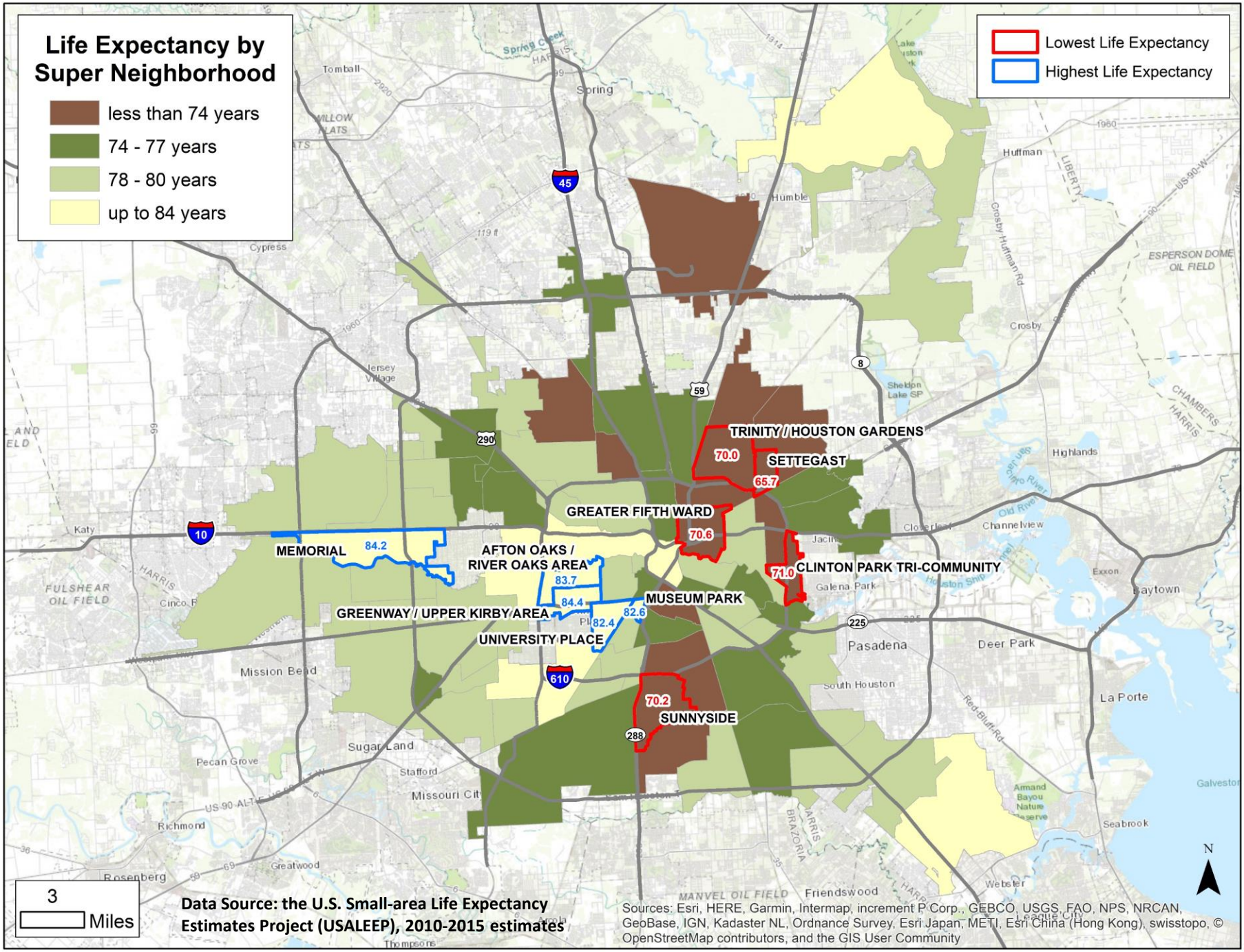


Life Expectancy by Super Neighborhood

- less than 74 years
- 74 - 77 years
- 78 - 80 years
- up to 84 years

- Lowest Life Expectancy
- Highest Life Expectancy



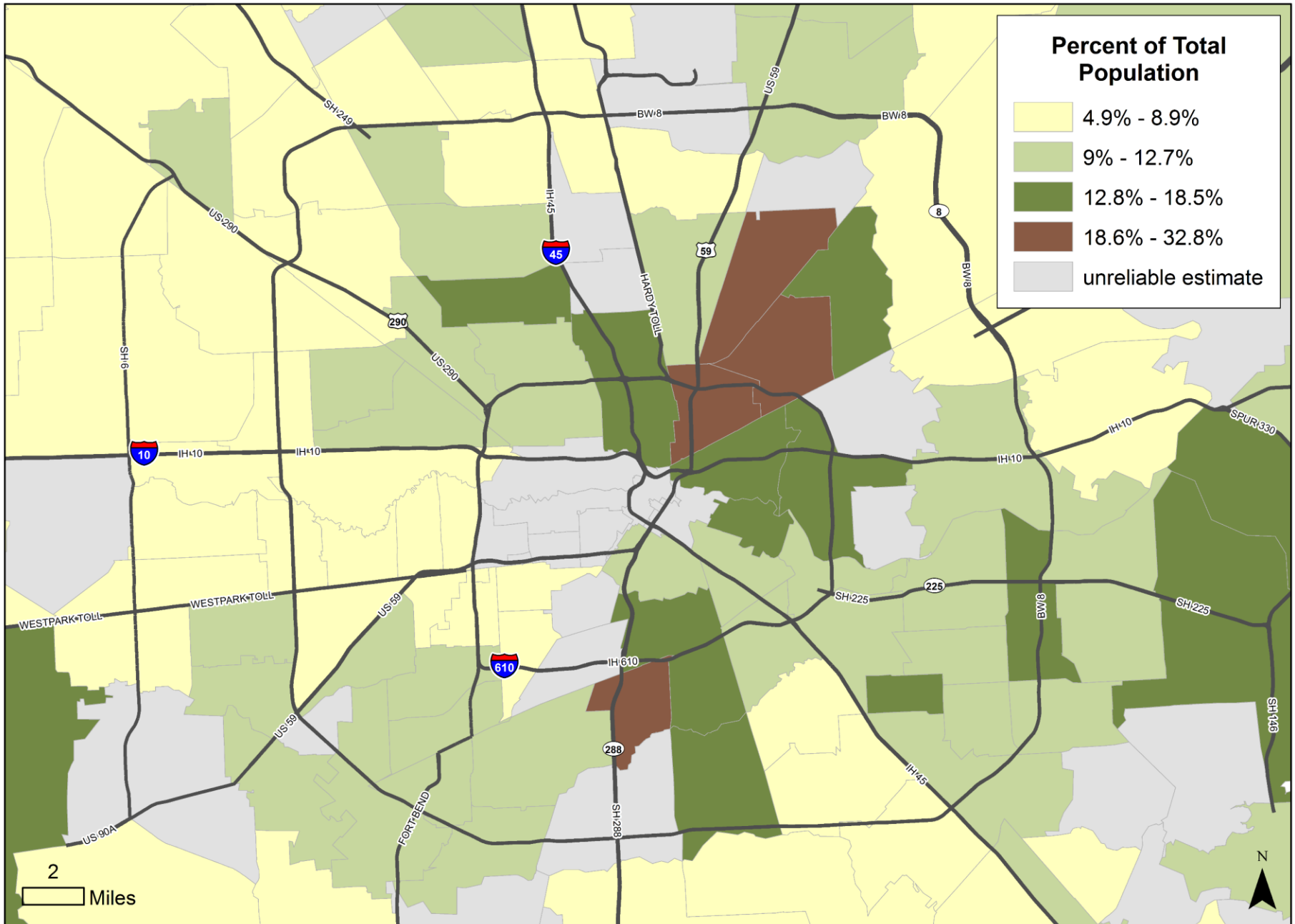
Data Source: the U.S. Small-area Life Expectancy Estimates Project (USALEEP), 2010-2015 estimates

Sources: Esri, HERE, Garmin, Intermap, increment P Corp., GEBCO, USGS, FAO, NPS, NRCAN, GeoBase, IGN, Kadaster NL, Ordnance Survey, Esri Japan, METI, Esri China (Hong Kong), swisstopo, © OpenStreetMap contributors, and the GIS User Community

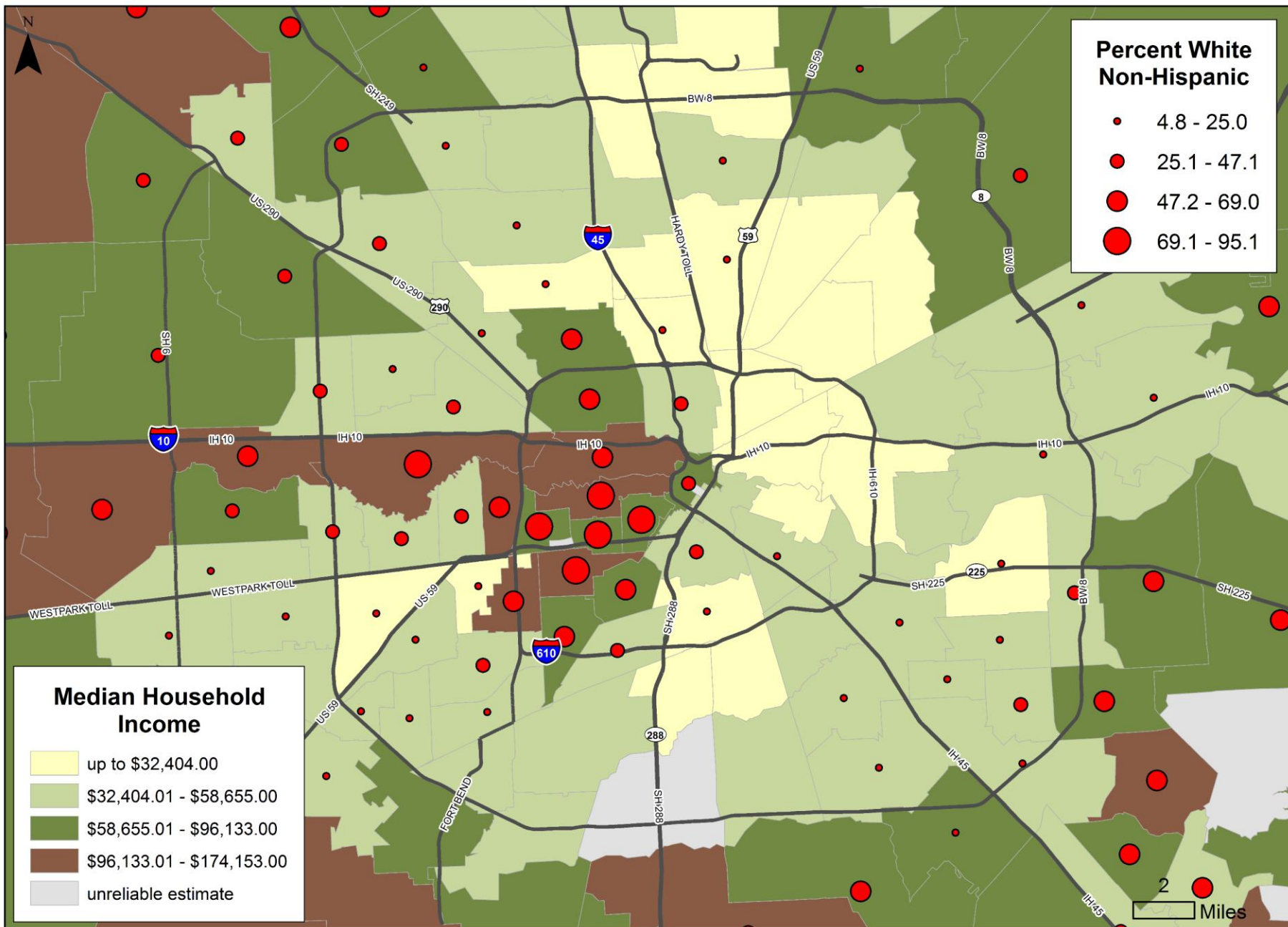
3 Miles



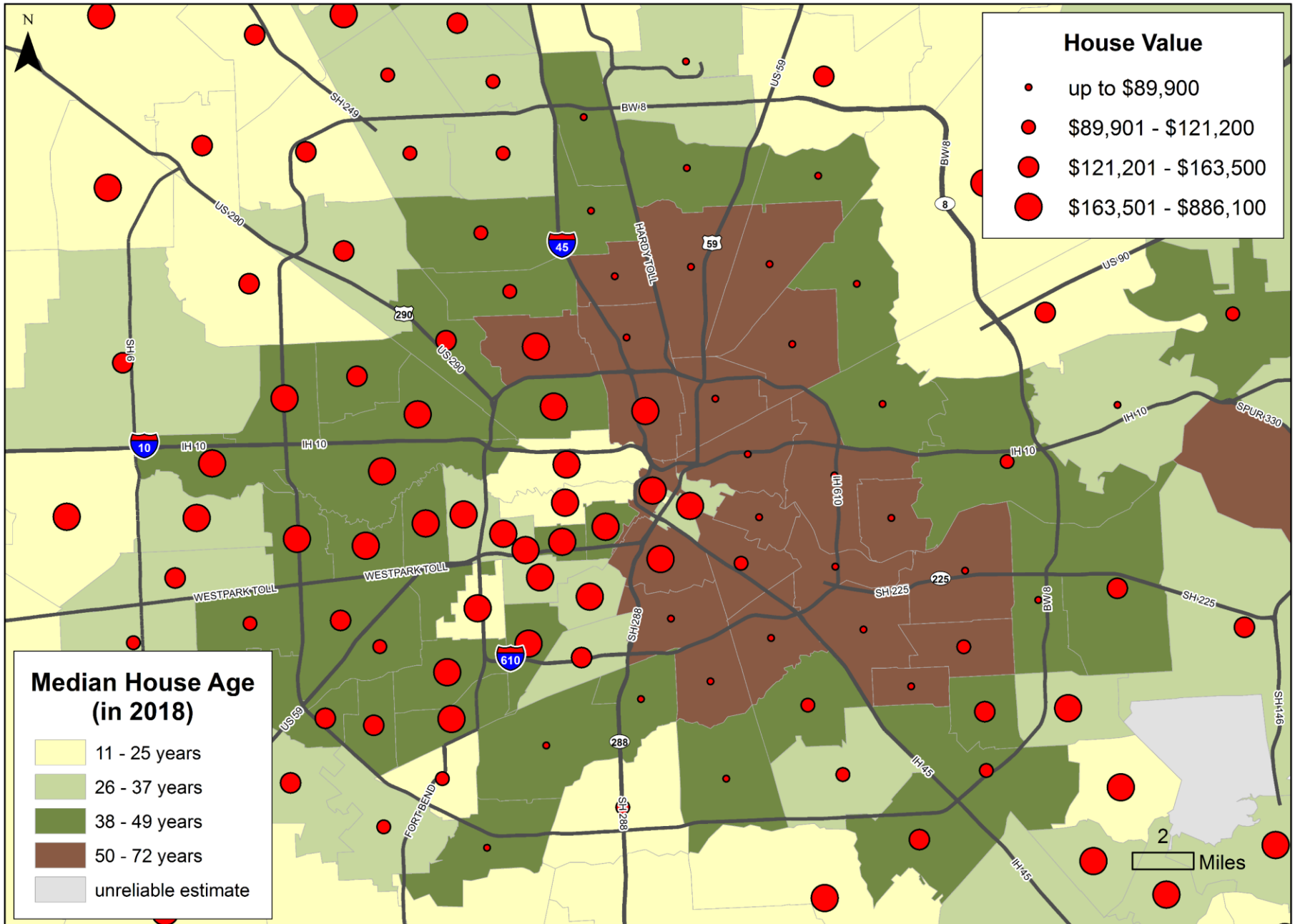
Disabled Population by ZIP Code (ACS 2012-2016)



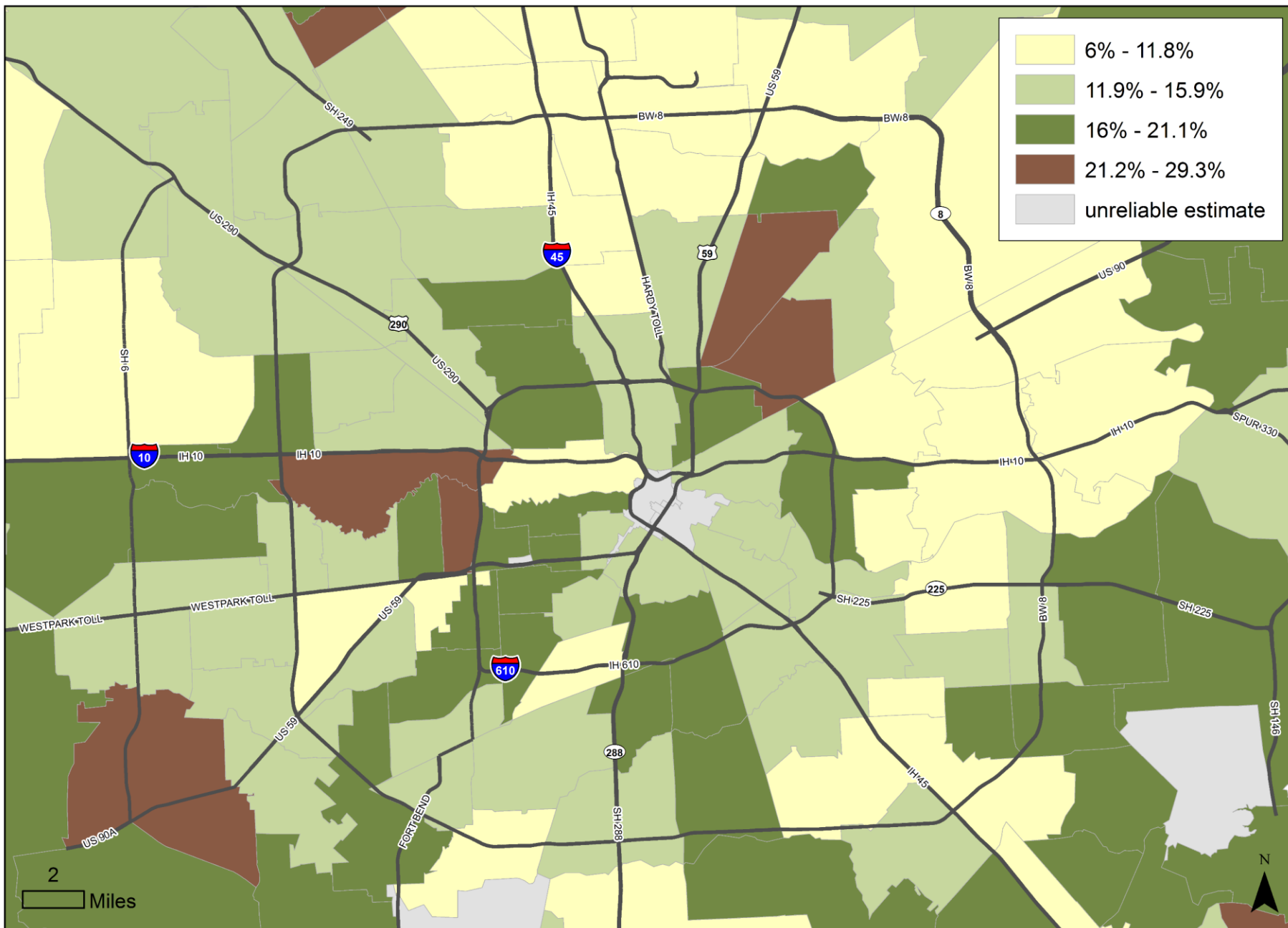
Household Income & Racial Segregation by ZIP Code (ACS 2012-2016)



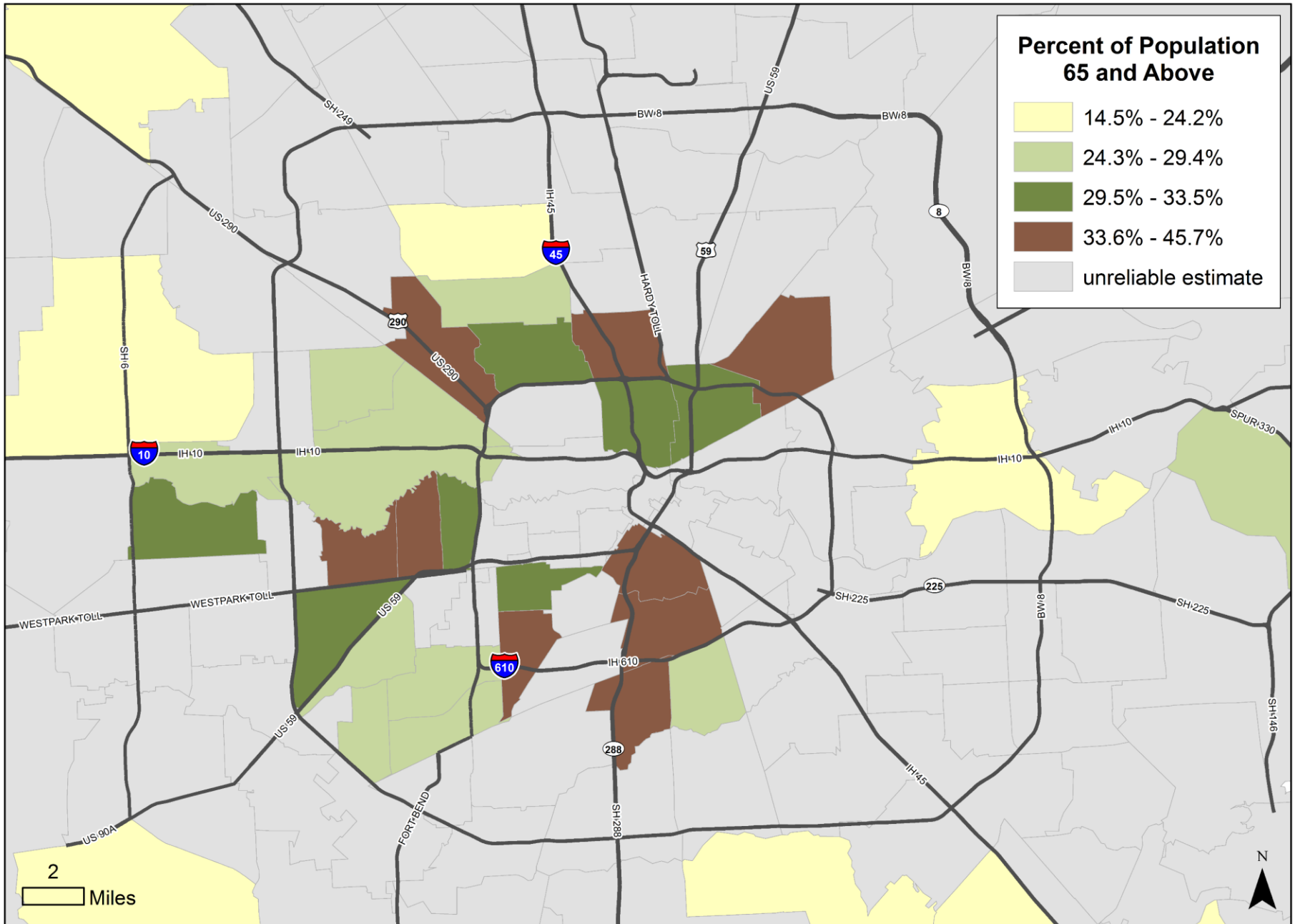
Median House Value & Age by ZIP Code (ACS 2012-2016)



Percent of Population 60 and Above by ZIP Code (ACS 2012-2016)



Population 65 and Above Living Alone by ZIP Code (ACS 2012-2016)



Percent of Population Living in Poverty by ZIP Code (ACS 2012-2016)

